



Newsletter

24th April 2026

Summer Term

We are delighted to extend a warm welcome to six new pupils and three new members of staff who have recently joined our school community.

Scarlett Tolan Austin
Albie Reggie Haris

Ms Lewis
Mrs Mintoft
Mr Butterworth

Please join us in making them feel welcome as they settle into life at our school.

Attendance

This week's attendance is

Whole School: 94.3 %

Robins: 91.8 %

Skylarks: 93.7 %

Owls: 91.8 %

Starlings: 96.4 %

Kites: 97.5 %

Celebrated in assembly this week

Harley F Oscar

Scarlett R Maisie G



Upcoming Events

April

Monday 27th

Yr 3/4 Tennis

Tuesday 28th

Robins Hay Festival workshop
Kites Trade & Transport workshop

Wednesday 29th

Whole School Dance Days workshop

Thursday 30th

Skylarks Invasion festival

May Monday 4th - BANK HOLIDAY

Tuesday 5th

Kites visit to Transport Museum

Term Dates

2026 / 27

Summer

Starts 13.04.26
Half Term 25.05.26-29.05.26
Ends 17.07.26

Autumn

Starts 03.09.26
Half Term 26.10.26-30.10.26
Ends 18.12.26

Spring

Starts 06.01.27
Half Term 15.02.27-19.02.27
Ends 25.03.27

2026

The Year of Reading



Reading Supports Writing

Strong readers often become confident writers.

At home: Encourage drawing or writing inspired by a story.

Recommended read: Fantastic Mr Fox by Roald Dahl – classic storytelling.

Attendance

We are pleased to introduce our new attendance initiative designed to encourage and celebrate positive school attendance across our school.

Regular attendance is vital to a child's progress and wellbeing. Children who attend school consistently are more likely to achieve well, build strong friendships and feel confident in their learning. Even small amounts of absence can impact their progress.

Weekly Attendance Prize Draw

Each week, two children who have achieved 100% attendance (one from Key Stage 1 and one from Key Stage 2) will be entered into a prize draw. One child from each key stage will be selected at random to receive a certificate and a small prize.

This week the children awarded are:

Scarlett C & Maisie A

Last week the children awarded were:

Kian & Beth S



Thanks to your enthusiasm, we are delighted to share that we raised an impressive total of £1,252.50.

We truly appreciate the effort of all who donated and helped spread the word—your support made this achievement possible.

In partnership with Knowsley CLCs, all parent/carers are invited to an:

Online Safety Information Session

This session is delivered virtually so can be watched from anywhere!
We will share the link with you privately.

Guide to Social Media & Livestreaming - this will include latest trends and emerging threats and will focus on developing your understanding of social media and livestreaming, the associated risks and steps we can take to support our children.

**WEDNESDAY
6TH MAY
2026
4PM – 4.45PM**



Knowsley
City Learning Centres

Online Safety Newsletter

April 2026

BBC iPlayer for Kids

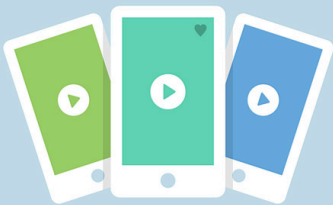
Children under the age of 13 can have their own iPlayer profile, which includes content from CBBC, CBeebies and other suitable BBC programmes.

You can download the iPlayer app and then find out how to create a profile here:

<https://www.bbc.co.uk/iplayer/help/questions/about-the-childrens-experience/iplayer-child-experience>

Going on a long journey? The BBC have also compiled a list of shows and films as well as games and quizzes to make the journey go quicker:

<https://www.bbc.co.uk/cbbc/watch/best-films-games-and-quizzes-to-keep-kids-entertained-on-long-journeys>



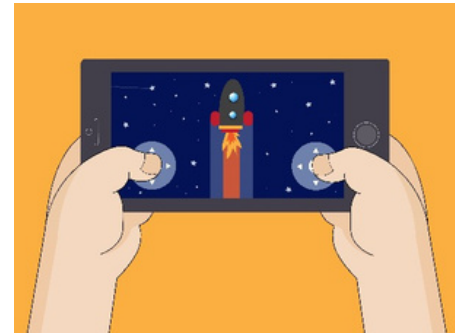
Would you like to read this newsletter in a different language? You can use the translate tool on our web version: <https://www.knowsleycitycs.org.uk/april-2026-primary/>

Age ratings in games

Age ratings exist to help protect your child as they show whether content is suitable for your child's age. Make sure you check the age rating of any game your child is playing.

Why should I check?

Not all games will be appropriate for your child. Some may appear child friendly due to fun or cartoon style graphics but still include unsuitable content. Age ratings consider factors such as violence, frightening content, bad language and/or in app purchases.



How can I check?

Most games are rated by PEGI (Pan European Game Information), who not only state the age you should be to play the game but also provide further content descriptors to give you an indication of the type of content that your child might encounter. Apps are rated by the App store/Google Play.

How can I stop my child from accessing a game they are not old enough to play?

You can set up **parental controls** to restrict access to games or apps that your child is not old enough to play and set restrictions so any downloads/purchases must be approved by you. For example:

Nintendo—restrict software by age so if you restrict to 10+, games with that rating or above cannot be played by your child.

Xbox/PlayStation—set an age limit so anything that exceeds that age rating must be approved.

Apple/Google (Family Link)—restrict your child from installing apps, allowing you to review before approving all purchases.

What else do I need to do?

Review any additional content descriptors, read reviews and check if the game includes any form of communication or in app purchases. This will help inform your decision as to whether the game is suitable for your child.

For any game your child plays, set up appropriate parental controls.

If you decide a game is not appropriate, explain to your child why.

We know your child might feel peer pressure to play certain games, but explaining your reasoning will help them understand your decision.

Further information

<https://www.ceopeducation.co.uk/parents/articles/gaming/>

Fake or Real? Know the Deal

Essex Police have launched a groundbreaking AI Safety Campaign in partnership with BT and EE to tackle the growing risks posed by artificial intelligence (AI) misuse and deepfake technology. This is the first time a UK police force is working directly with a global technology firm to provide practical advice to parents, guardians and young people.

AI technology offers incredible opportunities, but it also introduces serious risks when misused. Deepfake content – highly convincing, fabricated images or videos – can be used to exploit young people, sometimes without their knowledge. Artificially generated Child Sexual Abuse Material (CSAM) is one of the fastest-emerging crimes Essex Police is actively investigating.

The campaign is designed to help you understand:

- What deepfakes are and why they matter
- How to protect children from online harm
- What to do if an image is misused

Further information

Find out more here, including advice on how to protect your child:
<https://eephonesmart.co.uk/fake-or-real>

What is the Manosphere?

Have you seen the new Netflix documentary 'Louis Theroux: Inside the Manosphere' in which Louis Theroux interviews several 'influencers' that promote extreme / disturbing ideologies online. It is a shocking watch but prompts the importance of ensuring our children are protected from this content. In essence, the manosphere is against the empowerment of women and certain people promote these views and other harmful misinformation online via social media etc.

What should I do?

We need to develop critical thinking in our children and have age-appropriate conversations with them as explained in these two articles:

- <https://parents.actionforchildren.org.uk/feelings-behaviour/talking-about-feelings/talk-to-your-child-gender-equality/>
- <https://www.brook.org.uk/blog/4-ways-to-tackle-misogyny-among-young-people/>

Further information

- <https://www.unwomen.org/en/articles/explainer/what-is-the-manosphere-and-why-should-we-care>

Users of this guide do so at their own discretion. No liability is entered into. Current as of the date released 01.04.26. The inclusion of any links does not imply any affiliation with or endorsement of the linked websites, documents, or videos, nor are we claiming any ownership or copyright in the content of the linked materials.

How to set up parental controls on ChatGPT

Internet Matters have published an article detailing how you can link your own account to your child's account (they must be logged in) to set parental controls on ChatGPT.

You can read the article here:
<https://www.internetmatters.org/parental-controls/entertainment-search-engines/chatgpt-parental-controls/>

WhatsApp update: Parent-Managed Accounts

WhatsApp have announced that they are rolling out the option of Parent-Managed accounts for those under the age of 13. The settings will include allowing you to choose who can contact your child and ensuring only you can add them to groups. Find out more here:
<https://faq.whatsapp.com/894871699629864>

Whilst, these features could be useful, it is important to emphasise that just because the option now exists, WhatsApp may still not be an appropriate platform for your child to be on. We often receive reports of issues, particularly with group chats on WhatsApp. Wayne Denner (online safety trainer) explains more here:
<https://www.waynedenner.com/whatsapp-parent-managed-accounts-what-parents-need-to-know/>

AI and homework

AI can be a useful tool for helping children with homework both in understanding a topic and for research. However, please remember that it should not be used to complete tasks as this would constitute plagiarism.

BISHOP'S CASTLE COMMUNITY

FOOD BANK

MORE THAN A FOOD BANK

As well as a food bank and community café,
we also provide several drop in sessions
throughout the month, providing access to
vital services, and support.

Café & Play Area - every Tues & Thurs

Early Years Support - once a month

Citizens Advice Bureau - twice a month

Trained Nurse - once a month



NO REFERRAL NEEDED - JUST DROP BY

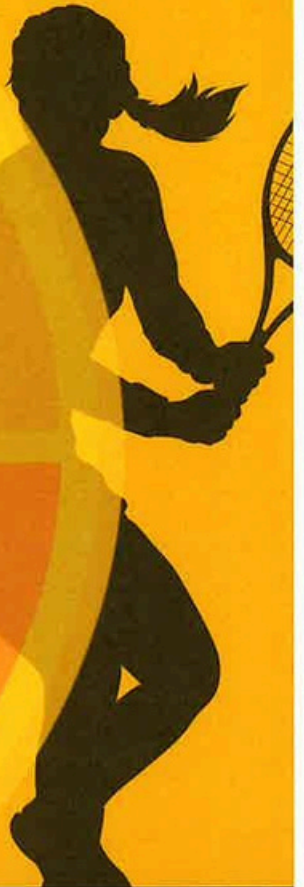
Phone: 07773 006 413

ACE THE

BASICS

BISHOPS CASTLE TENNIS CLUB SY9 5DW

STARTING WED 6TH MAY



£ 19.99

4 WEEK COACHING COURSE

JUNIOR TENNIS

3.45pm - 4.30pm ages 4 - 7

4.30pm - 5.15pm ages 8 - 11

Racket Options Available

BOOK OR CONTACT US:

01952 984 894

enquiries@wedotennis.co.uk

wdtvenues.co.uk/bishops-castle

 **DUNLOP**

SCAN
ME



**WE DO
TENNIS**



Shropshire Parenting Help and Support Line

01743 250950

Mon - Thurs, 9.30am - 4.30pm

Fri, 9.30am - 3.30pm

No judgment, just support. For **all** Shropshire families, including those whose children have special educational needs and/or disabilities (SEND)



Does your child struggle with their sleep?

Free Sleep Tight Groups

Join us on one of our virtual or face-to-face groups and:

- Find out why sleep is important for our health and emotional wellbeing
- Get support to help improve sleep and bedtime routines
- Meet other parents/carers to share and discuss experiences

Sleep Tight Universal Group 24th April 2026 from 10.00am to 12.00pm
Virtually ViaMS Teams

Sleep Tight SEND Group 12th June 2026 from 10.00am to 12.00pm

at The Keystone Academy, Squinter Pip Way, Shrewsbury, SY3 8XQ

The groups run for 5 weeks excluding the school holidays and bank holidays.

Groups with SEND are suitable for parents/carers of Children who might have special educational needs and disabilities, no formal diagnosis is needed to attend the groups.

To book a place email Parenting.team@shropshire.gov.uk or call 01743 250950

Find out
more here



Shropshire
Council