



# Newsletter

27th March 2026

## TODAY in school...

Today we say goodbye to :

Miss Ockenden  
Miss Jones &  
Mr Mills

We would like to say a huge thank you and whilst we are sad to see you go, we are incredibly grateful for all you have given to our school. We wish you every success and happiness in the future.

Bishop's Castle will miss you !

## Attendance

This week's attendance is

Whole School: 95.6%

Robins: 99.4 %

Skylarks: 92.5 %

Owls: 94.9 %

Starlings: 98.4 %

Kites: 94.2 %

HAPPY  
EASTER

## Attendance Facts

This half-term our whole school attendance is 95.4%

and

40.9% of all pupils achieved 100% attendance - Well Done !



## Upcoming Events

### EASTER HOLIDAYS

Monday 30<sup>th</sup> March to Friday 10<sup>th</sup> April

### Monday 13<sup>th</sup> April

Start of Summer Term

### Tuesday 14<sup>th</sup>

Great Athletes visit from Chelsie Giles

### Friday 17<sup>th</sup>

Shropshire Cricket – whole school event

## Term Dates 2026

### Spring

Ends 27.03.26

### Summer

Starts 13.04.26

Half Term 25.05.26–29.05.26

Ends 17.07.26

### Autumn

Starts 03.09.26

Half Term 26.10.26–30.10.26

Ends 18.12.26

## 2026 The Year of Reading



### Non-Fiction Builds Curiosity

Information texts teach children how to learn from reading.

**At home:** Ask your child to share one fact they learned.

**Recommended read:** The World's Most Pointless Animals – silly facts with great appeal.

## **We are pleased to introduce a new attendance initiative designed to encourage and celebrate positive school attendance across our school.**

Regular attendance is vital to a child's progress and wellbeing. Children who attend school consistently are more likely to achieve well, build strong friendships and feel confident in their learning. Even small amounts of absence can impact their progress.

To support and promote excellent attendance, we will be introducing the following rewards:

### **Weekly Attendance Prize Draw**

Each week, two children who have achieved 100% attendance (one from Key Stage 1 and one from Key Stage 2) will be entered into a prize draw. One child from each key stage will be selected at random to receive a certificate and a small prize.

### **Fortnightly Class Reward**

Every two weeks, the class with the highest overall attendance will be rewarded with a special activity of their choice. This may include extra playtime, an art session, outdoor games, or another agreed activity.

We hope this initiative will encourage all pupils to attend school regularly and take pride in their attendance. We understand that there are times when absence is unavoidable due to illness; however, we kindly ask that, wherever possible, appointments are made outside of school hours and that children attend school every day they are well enough to do so.

Thank you for your continued support in helping your child achieve their very best. If you have any questions or require support with attendance, please do not hesitate to contact the school.

# Online Safety Newsletter

## April 2026

### BBC iPlayer for Kids

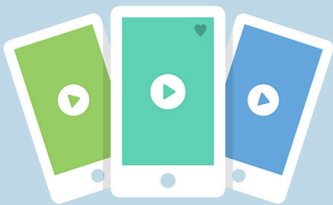
Children under the age of 13 can have their own iPlayer profile, which includes content from CBBC, CBeebies and other suitable BBC programmes.

You can download the iPlayer app and then find out how to create a profile here:

<https://www.bbc.co.uk/iplayer/help/questions/about-the-childrens-experience/iplayer-child-experience>

Going on a long journey? The BBC have also compiled a list of shows and films as well as games and quizzes to make the journey go quicker:

<https://www.bbc.co.uk/cbbc/watch/best-films-games-and-quizzes-to-keep-kids-entertained-on-long-journeys>



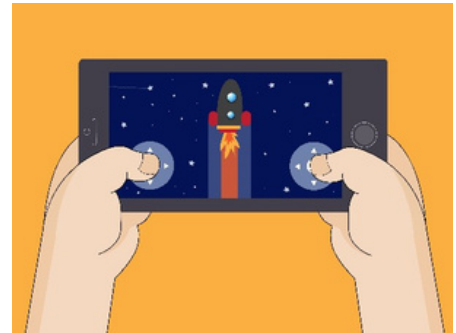
**Would you like to read this newsletter in a different language?** You can use the translate tool on our web version: <https://www.knowsleycitycs.org.uk/april-2026-primary/>

### Age ratings in games

**Age ratings exist to help protect your child as they show whether content is suitable for your child's age.** Make sure you check the age rating of any game your child is playing.

#### Why should I check?

Not all games will be appropriate for your child. Some may appear child friendly due to fun or cartoon style graphics but still include unsuitable content. Age ratings consider factors such as violence, frightening content, bad language and/or in app purchases.



#### How can I check?

Most games are rated by PEGI (Pan European Game Information), who not only state the age you should be to play the game but also provide further content descriptors to give you an indication of the type of content that your child might encounter. Apps are rated by the App store/Google Play.

#### How can I stop my child from accessing a game they are not old enough to play?

You can set up **parental controls** to restrict access to games or apps that your child is not old enough to play and set restrictions so any downloads/purchases must be approved by you. For example:

Nintendo—restrict software by age so if you restrict to 10+, games with that rating or above cannot be played by your child.

Xbox/PlayStation—set an age limit so anything that exceeds that age rating must be approved.

Apple/Google (Family Link)—restrict your child from installing apps, allowing you to review before approving all purchases.

#### What else do I need to do?

Review any additional content descriptors, read reviews and check if the game includes any form of communication or in app purchases. This will help inform your decision as to whether the game is suitable for your child.

For any game your child plays, set up appropriate parental controls.

If you decide a game is not appropriate, explain to your child why.

We know your child might feel peer pressure to play certain games, but explaining your reasoning will help them understand your decision.

#### Further information

<https://www.ceopeducation.co.uk/parents/articles/gaming/>

# Fake or Real? Know the Deal

Essex Police have launched a groundbreaking AI Safety Campaign in partnership with BT and EE to tackle the growing risks posed by artificial intelligence (AI) misuse and deepfake technology. This is the first time a UK police force is working directly with a global technology firm to provide practical advice to parents, guardians and young people.

AI technology offers incredible opportunities, but it also introduces serious risks when misused. Deepfake content – highly convincing, fabricated images or videos – can be used to exploit young people, sometimes without their knowledge. Artificially generated Child Sexual Abuse Material (CSAM) is one of the fastest-emerging crimes Essex Police is actively investigating.

The campaign is designed to help you understand:

- What deepfakes are and why they matter
- How to protect children from online harm
- What to do if an image is misused

## Further information

Find out more here, including advice on how to protect your child:  
<https://eephonesmart.co.uk/fake-or-real>

# What is the Manosphere?

Have you seen the new Netflix documentary 'Louis Theroux: Inside the Manosphere' in which Louis Theroux interviews several 'influencers' that promote extreme / disturbing ideologies online. It is a shocking watch but prompts the importance of ensuring our children are protected from this content. In essence, the manosphere is against the empowerment of women and certain people promote these views and other harmful misinformation online via social media etc.

## What should I do?

We need to develop critical thinking in our children and have age-appropriate conversations with them as explained in these two articles:

- <https://parents.actionforchildren.org.uk/feelings-behaviour/talking-about-feelings/talk-to-your-child-gender-equality/>
- <https://www.brook.org.uk/blog/4-ways-to-tackle-misogyny-among-young-people/>

## Further information

- <https://www.unwomen.org/en/articles/explainer/what-is-the-manosphere-and-why-should-we-care>

*Users of this guide do so at their own discretion. No liability is entered into. Current as of the date released 01.04.26. The inclusion of any links does not imply any affiliation with or endorsement of the linked websites, documents, or videos, nor are we claiming any ownership or copyright in the content of the linked materials.*

## How to set up parental controls on ChatGPT

Internet Matters have published an article detailing how you can link your own account to your child's account (they must be logged in) to set parental controls on ChatGPT.

You can read the article here:  
<https://www.internetmatters.org/parental-controls/entertainment-search-engines/chatgpt-parental-controls/>

## WhatsApp update: Parent-Managed Accounts

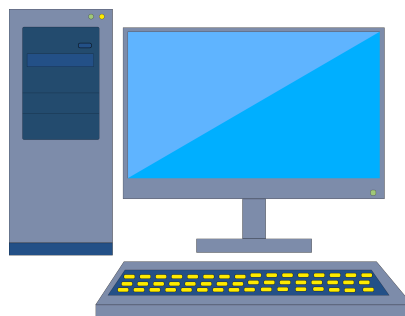
WhatsApp have announced that they are rolling out the option of Parent-Managed accounts for those under the age of 13. The settings will include allowing you to choose who can contact your child and ensuring only you can add them to groups. Find out more here:  
<https://faq.whatsapp.com/894871699629864>

**Whilst, these features could be useful, it is important to emphasise that just because the option now exists, WhatsApp may still not be an appropriate platform for your child to be on.** We often receive reports of issues, particularly with group chats on WhatsApp. Wayne Denner (online safety trainer) explains more here:  
<https://www.waynedenner.com/whatsapp-parent-managed-accounts-what-parents-need-to-know/>

## AI and homework

AI can be a useful tool for helping children with homework both in understanding a topic and for research. However, please remember that it should not be used to complete tasks as this would constitute plagiarism.

## New IT Provider



We are changing IT providers over the Easter holidays and we cannot guarantee that any emails sent to staff during this period will not get lost. All staff will have no access to their emails until after the holidays .

Please bear with us and thank you in advance for your understanding.

## ANNUAL PLANT SALE

18 April 2026, 9am-12noon

Outside Wrights Army Surplus  
32 Church St, Bishop's Castle



Plant donations welcome! Bring on the day or to  
arrange collection call Ruth on 07773 490773 or  
email [ruthmhoughton55@gmail.com](mailto:ruthmhoughton55@gmail.com)

Proceeds to Sport and Arts in the Community (SpARC)  
SW Shropshire, charity no. 1170997

THE ROYAL MINT  
MUSEUM

## SHORT STORY COMPETITION

**A GOLDEN OPPORTUNITY FOR YOUNG WRITERS!**

We are asking **7-11-year-olds** to write a story about **GOLD** using no more than **500-words**. The winner will receive **a gold coin, £5,000** for their school or local library, and their **story illustrated** by an artist.

Stories can be submitted between **16 February - 17 April 2026**.



[www.royalmintmuseum.org.uk](http://www.royalmintmuseum.org.uk)  
[storycompetition@royalmintmuseum.org.uk](mailto:storycompetition@royalmintmuseum.org.uk)

# Shropshire Parenting Help and Support Line

**01743 250950**

**Mon - Thurs, 9.30am - 4.30pm**

**Fri, 9.30am - 3.30pm**

No judgment, just support. For **all** Shropshire families, including those whose children have special educational needs and/or disabilities (SEND)



# Does your child struggle with their sleep?

## Free Sleep Tight Groups

Join us on one of our virtual or face-to-face groups and:

- Find out why sleep is important for our health and emotional wellbeing
- Get support to help improve sleep and bedtime routines
- Meet other parents/carers to share and discuss experiences

Sleep Tight Universal Group 24<sup>th</sup> April 2026 from 10.00am to 12.00pm  
Virtually ViaMS Teams

Sleep Tight SEND Group 12<sup>th</sup> June 2026 from 10.00am to 12.00pm

at The Keystone Academy, Squinter Pip Way, Shrewsbury, SY3 8XQ

The groups run for 5 weeks excluding the school holidays and bank holidays.

Groups with SEND are suitable for parents/carers of Children who might have special educational needs and disabilities, no formal diagnosis is needed to attend the groups.

To book a place email [Parenting.team@shropshire.gov.uk](mailto:Parenting.team@shropshire.gov.uk) or call 01743 250950

Find out  
more here



Shropshire  
Council

# Understanding Your Child

## *From Toddler to Teen*

“I met others going through the same things. It really helped me feel less alone.”

“The group boosted my confidence as a parent.”

### Join our friendly, relaxed group!

Parenting can be full of ups, downs, big feelings and lots of learning — for both you and your child! Come and join us as we chat about what’s going on for you and your family. Together we’ll make sense of tricky moments and share simple ideas that can make life calmer and more positive.

**Upcoming Sessions** (once a week over 10 weeks, excl. half terms and bank holidays)

- 13th April 2026 - 12.45–2.45pm–Belvidere Primary School, Shrewsbury (SY2 5YB)
- 13th April 2026 - 1.00–3.00pm–Ludlow Primary School (SY8 1HG)
- 15th April 2026 - 9.30–11.30am–Pontesbury Primary School (SY5 0TF)
- 15th April 2026 - 1.00–3.00pm–Wilfred Owen School, Shrewsbury (SY2 5SH)
- 15th April 2026 - 5.00–7.00pm–Online via MS Teams

### What We’ll Talk About

- Communicating and building connection with your child
- Routines like sleep and bedtime and any other routines you have as a family
- Understanding behaviour and big emotions
- Child development and how you can support it

### Want to Join Us?

Email: [parenting.team@shropshire.gov.uk](mailto:parenting.team@shropshire.gov.uk)

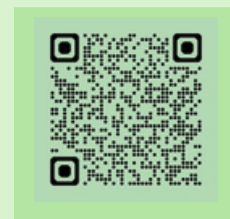
Call: 01743 250950

Visit: [TheParentingTeam|ShropshireCouncil](https://www.shropshire.gov.uk/parenting-team)



### Prefer flexible online learning?

Try our free online learning pathways at [Becoming Togetherness - Togetherness](https://www.shropshire.gov.uk/becoming-togetherness)





# Teddy Bears Picnic

Bring your favourite foods, teddy bear and picnic blanket.  
Everyone welcome.

SUN 5<sup>th</sup> APRIL

11am  
Bishops Castle Big Park

*Lane's Way Bishops Castle Support Network.*




# FOXHOLES Campsite FREE Easter Trail

Sat. 4<sup>th</sup> April

All welcome

10.30 – 2.30pm

Cakes, Bakes & Refreshments by Rhea's Rustic Kitchen




## SPRING FAMILY FUN

Short Animated films  
followed by a crafty by making session  
Thursday 2nd April 10.00-12.00

Guidance and all materials with plenty of freedom to create.

Under 8's must be accompanied by a willing helper  
Accompanying adults please book a free place  
(so we can make sure there's enough seating for the film)

Children £3.50 or 2 FOR £6.00

[www.sparctheatre.co.uk](http://www.sparctheatre.co.uk)

Sparc Theatre, Brampton Rd, Bishop's Castle SY9 5AY 01588 638038



## One Man. One Mic. 12 Hours. Karaoke-thon

A 12-hour sponsored karaoke challenge as Josh raises money for  
Bishop's Castle Carnival & Empathy for special children

Saturday 11th April | 11am – 11pm  
The Six Bells, Bishop's Castle

BBQ, bar, raffle and plenty of fun & games throughout the day!

Come along, support Josh's challenge and help raise money for two great causes.

**DONATE HERE**





# Easter Holiday Clubs

**Shrewsbury at**  
**The Croud Meadow, SY2 6ST**

**Ludlow at**  
**Bromfield Rd, Ludlow SY8 2BN**

For children aged 5 to 11, our holiday clubs are open to all abilities with a focus on fun and sports! Groups of mixed age and ability

9am –3pm 30<sup>th</sup> March and 31<sup>st</sup> March at Ludlow

9am –3pm 30<sup>th</sup> March –2nd April at Shrewsbury

9am –3pm 7th April –10<sup>th</sup> April at Shrewsbury

Scan the QR code or visit our website to book a single day for £18

[Foundationstfc.co.uk/fun](http://foundationstfc.co.uk/fun)

**Get in touch**

E: [admin@foundationstfc.co.uk](mailto:admin@foundationstfc.co.uk)

T: 01743 289177 opt 6





# U11 District Trials

26/27 Season

Current Year 5 boys

Location & Date TBC

Please follow link or QR code to complete  
expression of interest form

